



Upper Floor Flat 10 Bloom Grove

London, SE27 0HZ

£2,100 Per Month

A stylish and contemporary split level three double bedroom Victorian conversion flat. The property is offered to the market in superb condition and benefits from having bright and airy accommodation throughout. The flat has a modern fitted eat-in kitchen, huge reception room with dual aspect windows, stunning bathroom suite, and additional separate WC. Situated just 4 minutes walk from West Norwood train station. This is an ideal flat for a couple or sharers. (Walking times estimated by Google Maps)

- STUNNING SPLIT LEVEL FLAT
- OWN FRONT DOOR
- THREE DOUBLE BEDROOMS
- CONTEMPORARY BATHROOM
- MODERN EAT IN KITCHEN
- BRIGHT AND AIRY THROUGHOUT
- CENTRAL HEATING
- HIGH CEILINGS
- FEATURE FIREPLACE
- TASTEFULLY DECORATED

Viewing

Please contact our Galloways West Norwood Office on 020 8766 6111

if you wish to arrange a viewing appointment for this property or require further information



3



1

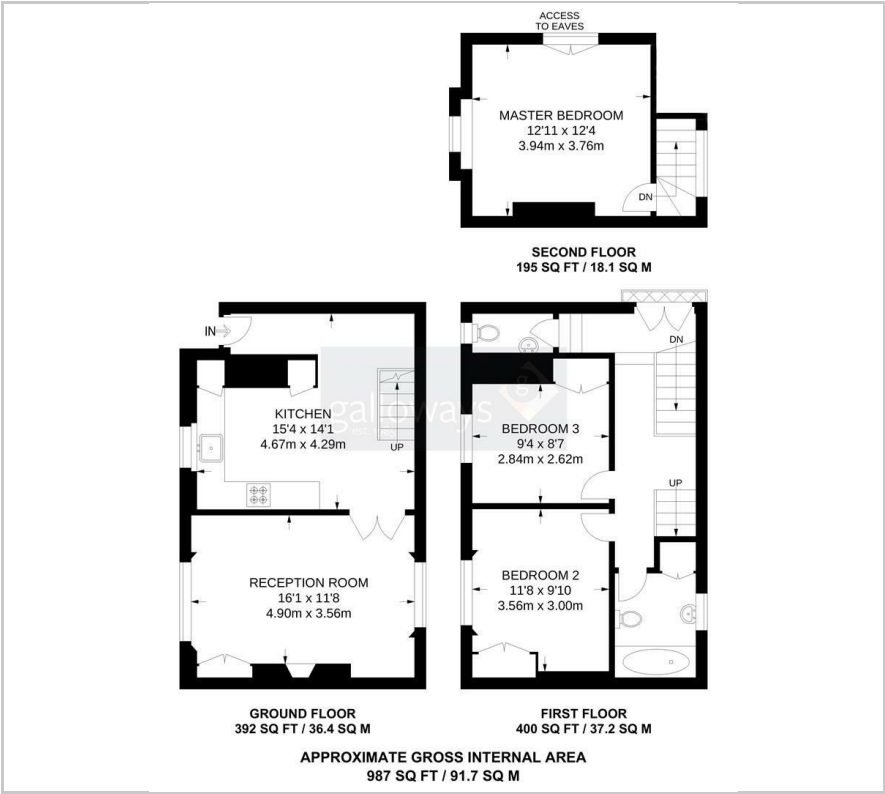


1



D

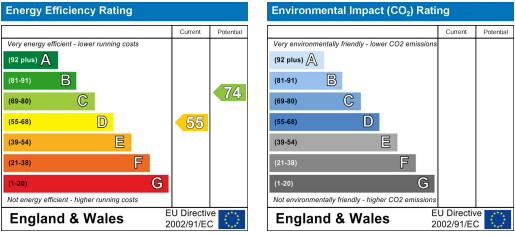
Floor Plan



Area Map



Energy Efficiency Graph



These particulars, whilst believed to be accurate are set out as a general outline only for guidance and do not constitute any part of an offer or contract. Intending purchasers should not rely on them as statements of representation of fact, but must satisfy themselves by inspection or otherwise as to their accuracy. No person in this firm's employment has the authority to make or give any representation or warranty in respect of the property.